

# FOUR POST BOAT STORAGE LIFT

**PEAK**<sup>®</sup>  
World-class lifts

*This new series boat storage lifts are engineered to revolutionize the way you store your recreational boats. They come with three versatile designs: Standard, Extended Length & Capacity, and Extended Height that delivering the perfect fit for any boat. With two adjustable width settings, these lifts feature a large drive-in clearance over 110" to accommodate various trailers, delivering superior storage experience exceeds expectations.*

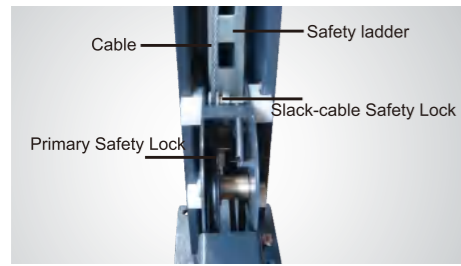
 Patent No.:  
2023232158140



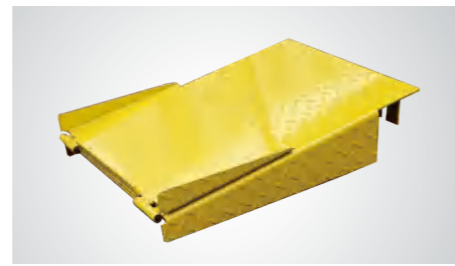
▲ Proprietary lock control system.



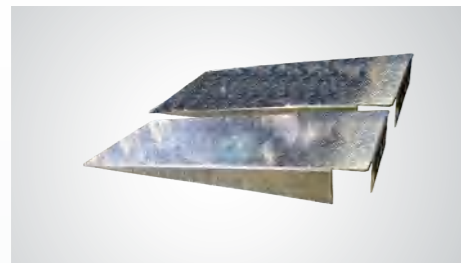
▲ Adjustable trailer platform included as standard. Adj. range: 1077mm~1682mm.



▲ Double safety locks provide additional safety.



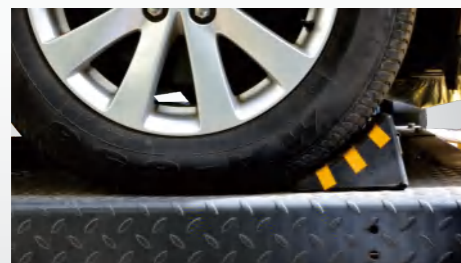
▲ Foldable drive-on ramps. (each lift 2 units).



▲ Optional extended aluminum drive-in ramp.  
Kits No.: 40815, each lift needs 2 units.



▲ Optional motor protective cover (with emergency stop switch), Kits No.: 40810.



▲ Optional rubber wheel chock  
P/N: 40811



▲ Optional trailer extended platform adds an extra 609mm (24") length, Kits No.:40818

**PEAK CORPORATION**  
<http://www.peaklift.cn>



No.3 Luomu Road, Muyuan, Shishan Town, Nanhai District, Foshan (528225), China  
Tel:86-757-81102815 Fax:86-757-81102809





Standard  
**MODEL 408-HPX**  
3500KG (8,000lbs)



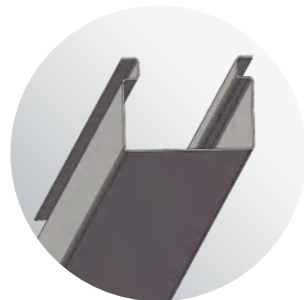
Extended Length & Capacity  
**MODEL 409-HPX**  
4000KG (9,000lbs)



Extended Height  
**MODEL 408HLX**  
3500KG (8,000lbs)

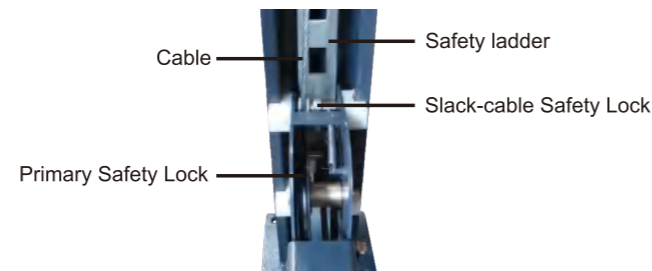
## FEATURES

- Lifting capacity: 3500KG (8,000lbs) and 4000KG (9,000lbs);
- Proprietary lock control system;
- Manual release, air-free operation;
- Dual safety devices mechanisms: both primary safety locks and cable-slack protection;
- Integrated non-skid diamond platforms;
- Flexible installation, power side could be at any corner;
- Two widths settings come standard to accommodate various boats;
- Foldable drive-in ramps come standard
- High quality hydraulic cylinder design and manufactured at high standard.



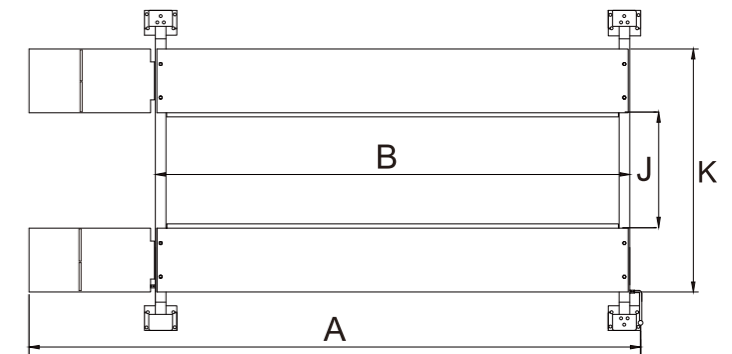
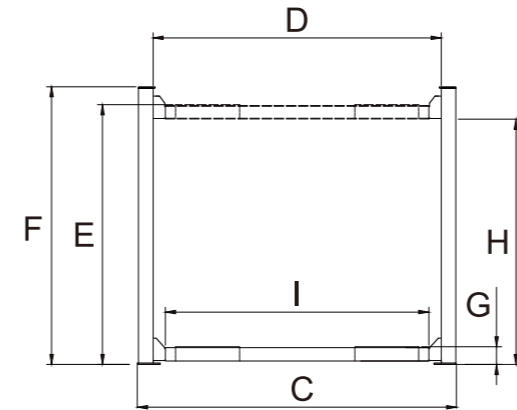
### EXCLUSIVE FEATURE

Double-S shape column



### EXCLUSIVE FEATURE

Commercial double safety locks



## SPECIFICATIONS

Model	Lifting Capacity	Lifting Time	A		B		C		D		E		F		G		H		I	J		K	Gross Weight	Motor Power
			Overall Length (Inc.Ramps)	Outside edge of crossbeams	Overall Width	Width Between Posts	Max. lifting height	Max. locking height	Overall Height	Minimum Height	Max. Underneath Height	Max. Lock Underneath runway	Drive-Thru Clearance	Width Between Runways	Outside Edge of Runways									
408-HPX	3500kg	46S	5642mm (222 1/8")	4615mm (181 11/16")	3350mm (131 7/8")	3104mm (122 1/4")	2227mm (87 11/16")	2157mm (84 15/16")	2455mm (96 5/8")	145mm (5 11/16")	2107mm (82 15/16")	2037mm (80 3/16")	2820mm (111")	1181/1686mm (46 1/2" / 66 3/8")	2131/2636mm (83 7/8" / 103 3/4")	719kg (1,585lbs)	3.0HP 220V							
409-HPX	4000kg	57S	6049mm (238 1/8")	5022mm (197 3/4")	3350mm (131 7/8")	3104mm (122 1/4")	2237mm (88 1/2")	2167mm (85 5/16")	2455mm (96 5/8")	155mm (6 1/8")	2097mm (82 9/16")	2027mm (79 13/16")	2820mm (111")	1181/1650mm (42 3/8" / 64 15/16")	2197/2666mm (83 1/2" / 104 15/16")	935kg (2,061lbs)	3.0HP 220V							
408HLX	3500kg	54S	5642mm (222 1/8")	4615mm (181 11/16")	3350mm (131 7/8")	3104mm (122 1/4")	2659mm (104 11/16")	2589mm (101 15/16")	2870mm (113")	145mm (5 11/16")	2539mm (99 15/16")	2469mm (97 3/16")	2820mm (111")	1181/1686mm (46 1/2" / 66 3/8")	2131/2636mm (83 7/8" / 103 3/4")	783kg (1,726lbs)	3.0HP 220V							

\*\*\*The images, technical specifications, and descriptions shown here are subject to change without prior notice. Please contact us for the latest information if necessary.\*\*\*